

## REOPENING PLAN: FEBRUARY 1, 2021 CORONADO MIDDLE SCHOOL

Dear Triton Families,

We are excited to welcome our hybrid students back to campus. Below you will find an overview of the on-campus procedures and logistics that will help ensure we are able to get your children safely on and off campus each day. Please familiarize yourself with these procedures and general safety protocols that are based on the most up to date guidelines from CDC, state and local public health, and Board Policy. Please understand that adherence to these guidelines is what allows us to be open and bring kids back to school in-person. Your support in making sure these guidelines are followed is greatly appreciated. Please refer to the [CUSD Safe at School Reopening Plan](#) for more detailed information related to health and safety protocols.

### **BELL SCHEDULE:** PHASE 4: Scheduled to begin on February 1, 2021

**ALL** CMS students - 100% BRIDGE and HYBRID- will follow the schedule below

- 100% BRIDGE = 5 days via distance learning
- HYBRID = In-Person 2 days a week and BRIDGE 2 days a week and Mondays:

### PHASE 4/Semester 2: CMS HYBRID and BRIDGE SCHEDULE

	All students on BRIDGE	Group A IN PERSON Last Name A-L Group B & BRIDGE Group Zoom	Group A IN PERSON Last Name A-L Group B & BRIDGE Group Zoom	Group B IN PERSON Last Name M-Z Group A & BRIDGE Group Zoom	Group B IN PERSON Last Name M-Z Group A & BRIDGE Group Zoom
	MONDAY	TUESDAY	WEDNESDAY	THURSDAY	FRIDAY
8:05-9:00	T3	Per 1	Per 4/5	Per 1	Per 4/5
9:05-9:35	Per 1	Break	Break	Break	Break
9:35-9:55	Break	9:20-9:40	9:40-10:55	10:55-11:15	11:15-12:30
10:00-10:30	Per 2	Per 2	Per 6	Per 2	Per 6
10:35-11:05	Per 3	Break	Break	Break	Break
11:10- 11:40	Per 4/5	Per 3	Per 7	Per 3	Per 7
11:40-12:25	Lunch	Lunch - Students leave campus for the day Afternoon Instruction via Zoom			
12:30-1:00	Per 6	1:20-2:45	Support Time Periods 1,2,3 Zoom	Support Time Periods 4,5,6,7 Zoom	Support Time ALL Periods Zoom
1:05-1:35	Per 7				
1:45-2:15	SEL Groups w/Admin and Counselors				

Campus will be open for in person learning Tuesday-Friday from 8:00 am-12:30 pm  
Students will be divided into two groups:

- **Group A:** Last names A-L
- **Group B:** Last names M-Z

Students on BRIDGE for the remainder of the year = BRIDGE via Zoom 5 days of the week.

We are unable to offer a 7 period Monday schedule until COVID-19 has been eradicated.

## ENTRY/ARRIVAL/DEPARTURE TIMES, MAPS & LOGISTICS:

**Students** To maximize physical distancing upon entering campus, **are REQUIRED to enter through the designated grade level gate listed below.**

- Students are to line up according to signage at the gate
- After entry, students will go directly to their classrooms. They will not hang out in the quad or on campus.

### 6th Grade Students

Entry Gate BLUE  
F Avenue Bike Gate



### 7th Grade Students

Entry Gate RED  
Cutler Field corner of  
F Ave. and 6th St.



### 8th Grade Students

Entry Gate GREEN  
G Avenue Bike Gate



**All gates will open at 7:55 am on Tuesday thru Friday**

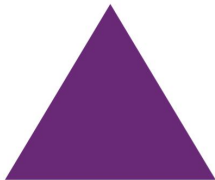
**Group A:** Last Name A- L on campus Tuesday and Wednesday

**Group B:** Last Name M-Z on campus Thursday and Friday

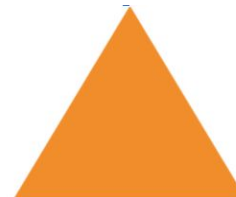
### **Additional Gates:**

**\*Students arriving after 8:05 am**

**MUST enter through Gate PURPLE**  
front doors of CMS on F Avenue



Students may EXIT through Gate ORANGE  
G Avenue by room 121



**REQUIRED to enter campus:** Signed Health and Safety Agreement. If you completed this during Phase , you do not need to complete it again. The Agreement can be found at this link [Health and Safety Link](#)

A staff member will be monitoring each gate daily. They will welcome students, do a “wellness check,” and provide on campus reminders. **Please adhere to the gate and arrival time listed above.**

### **At the gate students will:**

- Follow the physical distancing signage stickers on the ground when lining up to enter their gate

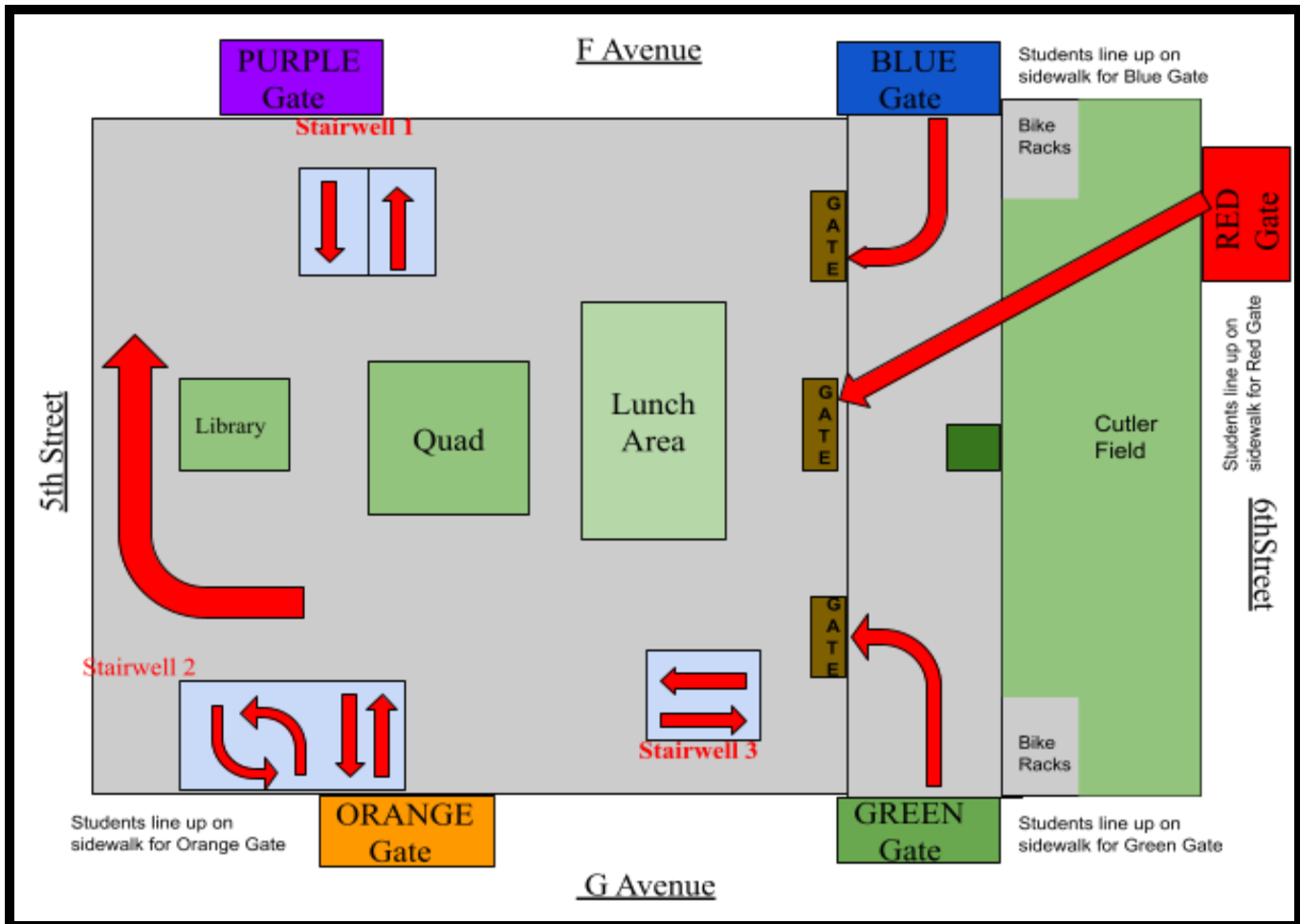


- Make sure their mask is covering the nose and mouth. (list of acceptable masks below) If a student does not have an acceptable mask, one will be provided at the gate.
- After being checked in, students will sanitize their hands and walk directly to class.

- If a student rides a bicycle to school, he/she will not be able to go directly to the bike racks. Students will wait to be checked in at their assigned gate. They will then park and lock their bicycle in the bike rack area and go directly to their classroom.

Parents are not allowed to enter campus with their student. Campus is closed to all non essential visitors.

**Departure Time:** All students will leave campus at 12:30 pm. Students may use the BLUE, RED, GREEN, and ORANGE gates to exit campus.



**DAILY CHECK FOR SIGNS AND SYMPTOMS COVID-19 Screening:**

**Student Policy:**

- Parent/Guardian has completed the Health and Safety Agreement for HYBRID Instruction.
- The Health and Safety Agreement for HYBRID Instruction **must be brought to school or emailed to [CMSinfo@coronadousd.net](mailto:CMSinfo@coronadousd.net) on the first day of a student's return to campus.** By signing the agreement, parent agrees that their student is symptom free and does not have a temperature greater than 100.0 degrees. **If you submitted a Health and Safety Agreement during Phase 3 on campus student experiences, you DO NOT need to complete it again.**
- Students will not be permitted on campus without a signed Agreement form.
- Parents must keep a student home when experiencing any of the COVID-19 symptoms identified by the CDC.
- The Agreement can be found at this link [Health and Safety Link](#)

**Staff Policy:**

- CMS staff have completed the Health and Safety Agreement for being present in the school building.
- Staff members must screen daily and stay home and contact their supervisor when experiencing any of the COVID-19 symptoms identified by the CDC.

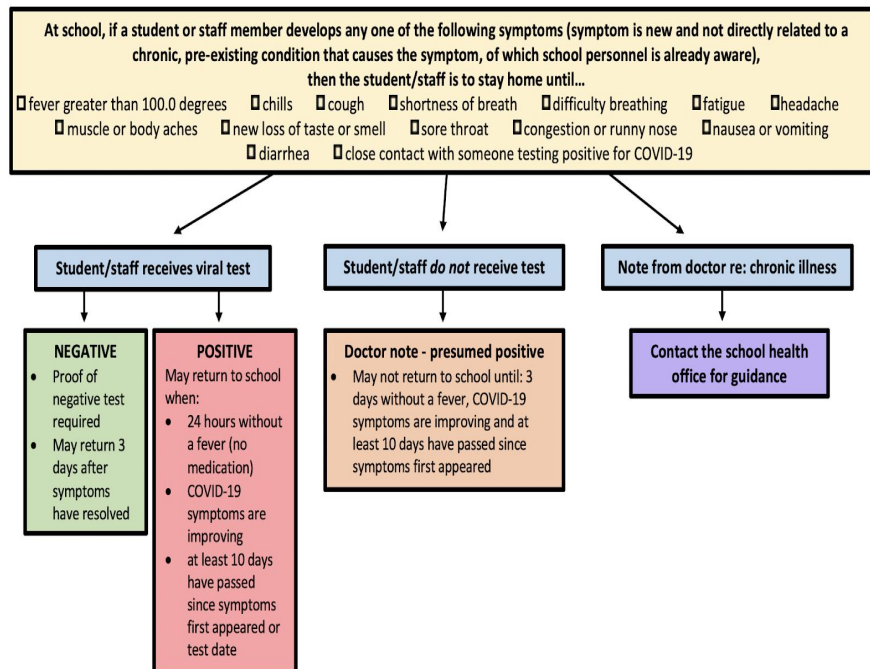
**RESPONSE TO COVID-19 SYMPTOMS AT SCHOOL**

**Students and Staff:**

- Students and staff with fever, symptoms, or exposure to COVID-19 will be sent home.
- If a student is exhibiting symptoms of COVID-19, staff will communicate with site administration and nurses. Nurse will communicate with the parent/guardian to determine if the symptoms are new/not typical and arrange student pick up.

**If there is a possible exposure, please communicate with the District Nurse and COVID-19 Health Team at [CUSD.Nurse@coronadousd.net](mailto:CUSD.Nurse@coronadousd.net).** The team will notify local health officials and staff immediately of any positive case of COVID-19 while maintaining confidentiality, as required under FERPA and state law related to privacy of educational records. The District nurses will coordinate notifications to students and families.

Kid-Friendly Version	Adult Version
<i>Yesterday or today, have you, or someone living with you, had:</i>	<i>Within the last 24 hours, have you, or someone living with you, had:</i>
Fever greater than 100.0	Fever greater than 100.0 F
Chills or feeling sick	Chills
Cough or difficulty breathing	Cough
	Shortness of breath
	Difficulty breathing
Feeling really tired	Fatigue
Head hurts	Headache
Feeling "achy"	Muscle or body aches
Not able to taste or smell	New loss of taste or smell
Sore throat	Sore throat
Runny or stuffy nose	Congestion or runny nose
Feeling sick to the stomach or time you "threw up"	Nausea or vomiting
Runny poop	Diarrhea
Been around someone with COVID	Close contact with someone testing positive for COVID19



# COVID-19 Symptom Decision Tree\*

(Version: 1/11/2021)

\*Applies regardless of vaccination status



## At school, student or staff member develops any one of the following signs or symptoms:

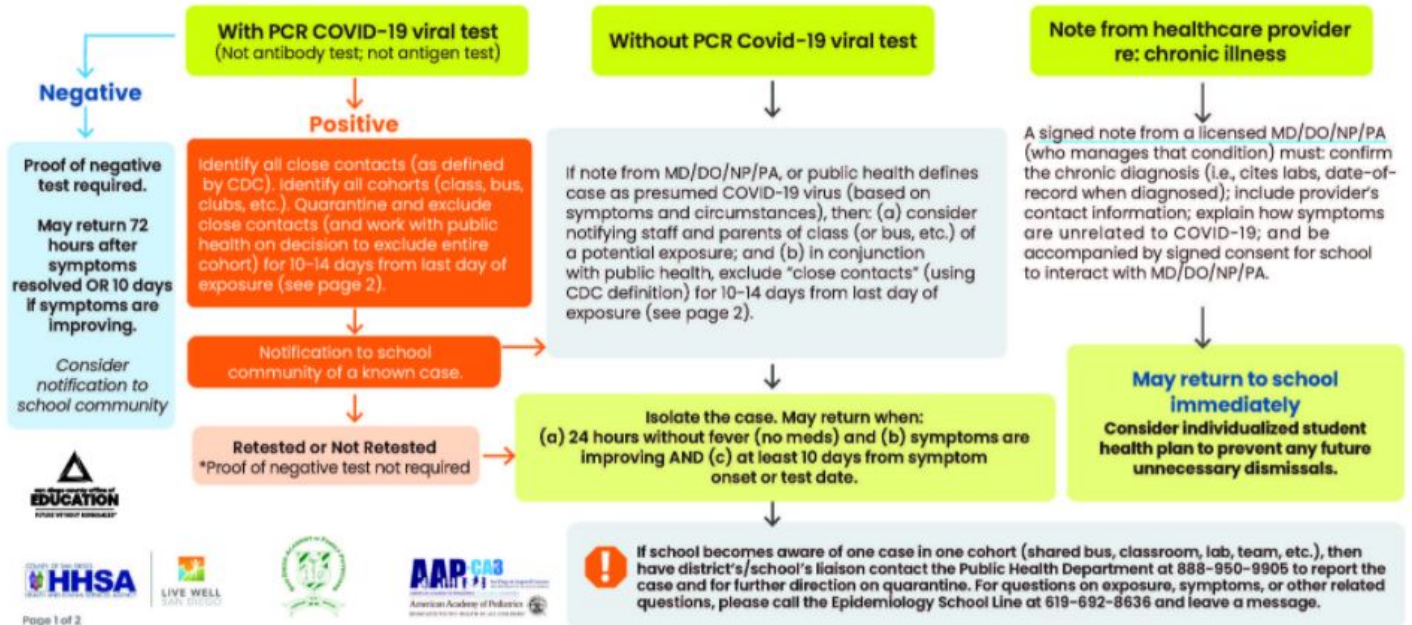
- Fever with or without chills/rigors (fever defined as  $T > 100.0$  that does not resolve within 30 min. without medication)
- Cough\*
- Shortness of breath
- Nasal congestion/rhinorrhea (runny nose)\*
- Sore throat
- Nausea, vomiting, or diarrhea\*
- Fatigue\*
- New loss of taste/smell
- Headache\*
- Muscle or body aches\*
- Poor feeding or poor appetite\*

\* Disregard this symptom if school personnel already aware of a chronic, pre-existing condition that causes the symptom. The nature of the presenting symptom (e.g., duration, intensity) must be consistent with the underlying chronic condition.

**ACTION:** Apply appropriate PPE; isolate student/staff member until sent home; recommend they reach health care provider for instructions.  
Note: Other infections can cause same symptoms (e.g., flu, strep, etc.) but these do not rule out COVID-19 as co-occurring



## STUDENT / STAFF TO STAY HOME UNTIL...



**Plan for When a Staff Member, Child or Visitor Becomes Sick:** When a staff member, child or visitor becomes ill. The site will use an isolation area to separate anyone who exhibits symptoms of COVID-19. Any students or staff exhibiting symptoms will immediately be required to wait in an isolation area until they can be transported home. The site will contact 9-1-1 without delay for serious illness including persistent pain or pressure in the chest, confusion, or bluish lips or face. All areas used by any sick person will be closed off and will not be used before cleaning and disinfection. To reduce risk of exposure, the site will wait 24 hours before it's cleaned and disinfected. If it is not possible to wait 24 hours, the site will wait as long as practicable

### PROMOTE HEALTHY HYGIENE

Wash their hands before and after eating; after coughing or sneezing; after being outside; after class where shared items were handled; and before and after using the restroom.

- Wash their hands for 20 seconds with soap, rubbing thoroughly after application, and use paper towels to dry hands thoroughly.
  - Use fragrance-free hand sanitizer when soap and water is not available.
  - All students to use hand sanitizer before entering campus
- hand sanitizer is available in every classroom. Staff and students will be encouraged to wash hands during passing periods. Students will be asked to use hand sanitizer before entering each class.

**FACE COVERINGS:** All students and staff are **REQUIRED** to wear a face covering at all times while on the school campus. This is one of the conditions for reopening to Hybrid instruction. There will be masks available and provided to students or staff who do not have a face covering. Following the most recent

guidelines from CDPH, **vented masks, bandanas and gaiters are NOT permitted**, as they offer less protection.

Staff will instruct students on the proper use of face coverings. Face coverings should:

- Fit snugly but comfortably against the side of the face
- Be secured with ties or ear loops
- Include multiple layers of fabric
- Allow for breathing without restriction
- Be laundered or disposed, daily

## COVID-19 Face Coverings for Schools

### ACCEPTABLE



### UNACCEPTABLE



## **PPE and SANITATION**

All classrooms will have:

- desks with plexiglass dividers
- disinfecting products
- Hand sanitizer
- gloves
- masks

CUSD has increased cleaning and disinfecting practices in order to reduce the spread of germs and protect against a potential COVID-19 outbreak. Strategic efforts will be made to decrease the use of common areas such as leaving doors open, instead of multiple hands opening and closing doors. Desks, classrooms and common use areas will be cleaned and disinfected daily and in the evenings. Additional sanitation measures will include routines for frequent hand washing and use of hand sanitizer.

Frequently-touched surfaces within the school will be cleaned and disinfected daily, and as practicable frequently throughout the day by trained staff.

Frequently touched surfaces include:

Door handles • Light switches • Sink handles • Bathroom surfaces • Tables • Student Desks • Chairs

**All classrooms will be cleaned/disinfected with an electrostatic cleaner between class periods**

**IMPLEMENTING PHYSICAL DISTANCING:**

All students and staff are expected to practice physical distancing whenever practicable. All activities must allow for physical space between staff and students. Physical distancing signage and markers will be displayed/posted throughout the campus to remind students and staff to physically distance. Students are expected to physically distance themselves as much as possible in the following settings (six feet as practicable):

- Arrival to school and departure from school
- Inside classrooms (all classroom furniture will be arranged to provide for physical distancing)
- Outside during breaks ( other physical stretch breaks)
- Inside restrooms (2 students in restroom at a time - administration and teachers will review these procedures)
- During all campus activities
- 
- Students are required to follow all on campus directional stickers that are placed around campus and in high traffic areas to mitigate congregations of students.
- Tape floor markings will be used to support physical distance in halls and lines.
- During break and passing periods, school site support staff will monitor hallways, quad and field to maintain physical distancing
- In classrooms and other instructional spaces, directional stickers will be used to help the flow of students in an effort to decrease the congregation of students.
- Classroom furniture has been arranged to minimize student face to face contact, with the teacher desks 6 feet away from the student desks.
- Student desks have been arranged to be 6 feet apart with plexiglass shields on each desk
- Restrooms signs will be placed outside of the restroom indicating the capacity limit. When all stalls in the restrooms are being used, students and staff will wait outside until a stall is available. Physical distancing stickers will be placed outside of the restroom to maximize spacing between students.
- Locker rooms will not be in use until further notice.

Activities where there is increased likelihood for transmission from contaminated exhaled droplets such as band and choir practice will only take place outdoors with specific safety precautions in place:

**BAND:** Band students will resume practice outdoors, only. Students are required to use instrument bell covers and wear masks when not playing. Students will be arranged in a line formation with at least 6 feet distance between students.

**CHOIR:** Activities that involve singing will only take place outdoors.

**PE:** PE classes will take place outdoors, only, and students are required to wear a mask. Any shared objects and equipment will be limited to use by small groups of students and items will be cleaned and disinfected between uses. Students will hand sanitize at the start and end of PE classes

**BREAK:** Students may bring a snack and should bring their own water bottle, daily. Students will be provided with designated areas for consuming their snack during scheduled outdoor break time. Students are required to adhere to safety procedures communicated by CMS Staff.

**LUNCH:** The CMS cafeteria is not open for purchasing break or lunch food/drink items. At this time, lunch will not be served on campus nor will students be able to eat lunch on campus. We are unable to offer lunch on campus due to health and safety guidelines. PHASE 5 will include lunch on campus.

**DRINKING FOUNTAINS: Please be sure to provide a water bottle to your child each day.**

Students and staff should bring their own water bottle each day. All drinking fountains will be disabled, however, refillable water bottle stations are still functioning. Students should ensure bottle opening does not come into contact with fountain fixtures.

We will have a supply of water bottles in the event a student needs water and forgot to bring their own.

**TECHNOLOGY:** Students must bring devices to school each day. Computer (personal or school-owned that you checked out)

**INSTRUCTION:** Our Semester 2 Hybrid and BRIDGE Learning will continue to include concurrent curriculum delivery (CCD), livestream teaching as well as synchronous and asynchronous learning to accommodate students in the classroom and students at home.

**CLASS MATERIALS**

The following items are permitted to travel between home and school:

- Backpack/Tote Bag
- Teacher required materials (please see below)
- Chromebook/personal computer
- Water bottles
- Snack
- Sweatshirt/jacket/sweater

The following items will not be permitted at school:

- Toys
- Blankets
- electronics
- non-recommended school supplies

**Teacher Required Materials to Bring to School**

Students should bring a backpack with the following:

- Computer (personal or school-owned that you checked out)
- Headphones/earbuds
- Agenda
- Pens, pencils
- Paper
- Water Bottle
- \*other items noted in syllabus or required by teacher

\*\*\*Supplies will not be shared.\*\*\*

**LIMITING SHARING:** In an effort to limit the use of shared objects and equipment, we have planned on how items will be cleaned and disinfected between uses. Shared objects include but are not limited to PE equipment, learning aids, books, and electronic equipment. Science equipment: Small groups of students may share the equipment and procedures will be put in place to clean and disinfect before and after its use by students. Disinfectant wipes are supplied in each classroom. Where practical, additional supplies may be purchased to limit the sharing of materials.

**TRAINING**

All staff and students will receive thorough training on campus health and safety protocols and procedures (hand washing, sanitizing, arrival and departure procedures, social distancing, etc.). Parents should also reinforce these



routines and behaviors at home. Teachers and parents can use the following videos for educational training purposes:

- [How to Properly Wear a Face Covering](#)
- [Handwashing](#)
- [Social Distancing](#)
- [COVID-19 Videos for Kids and Parents](#)